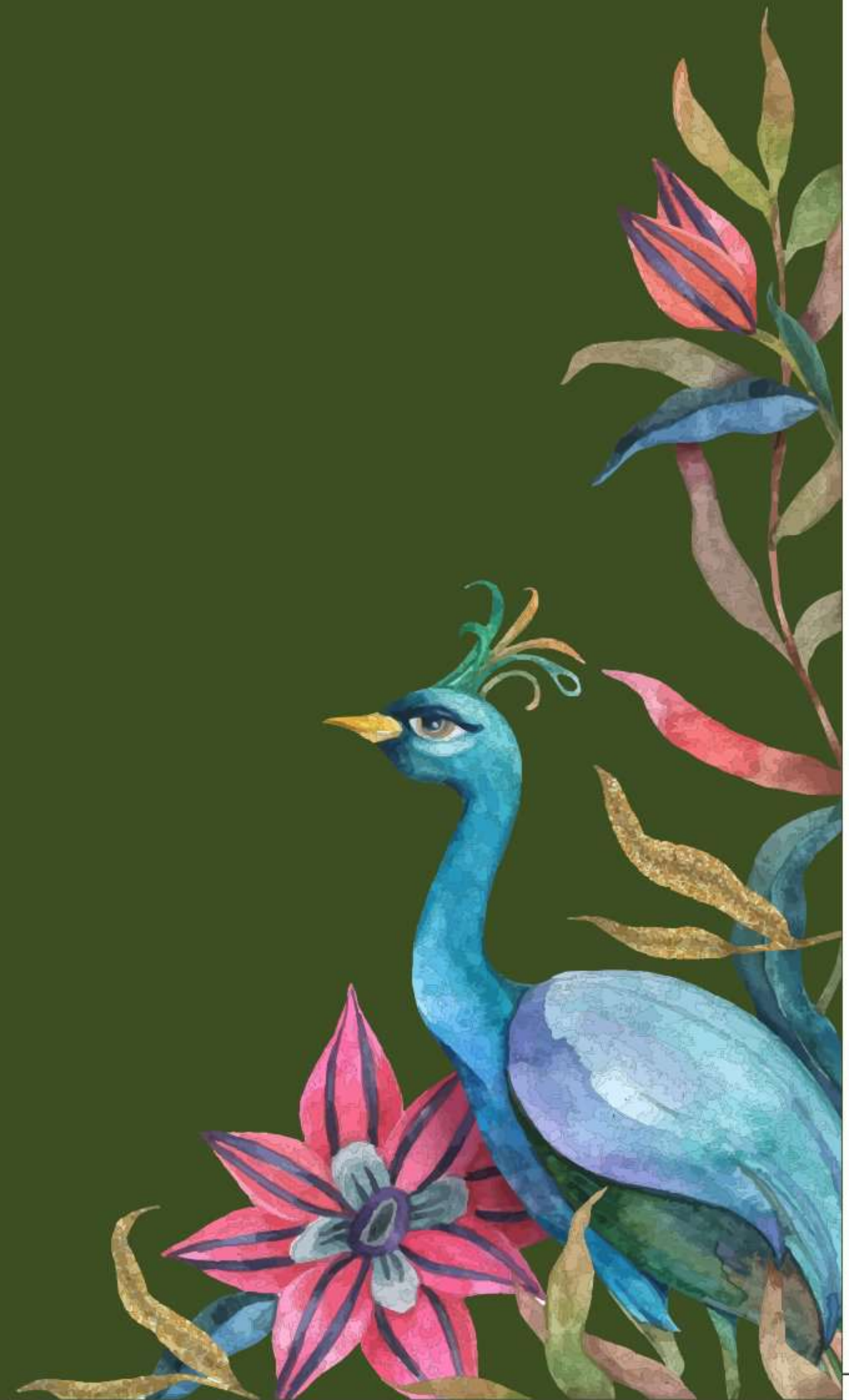


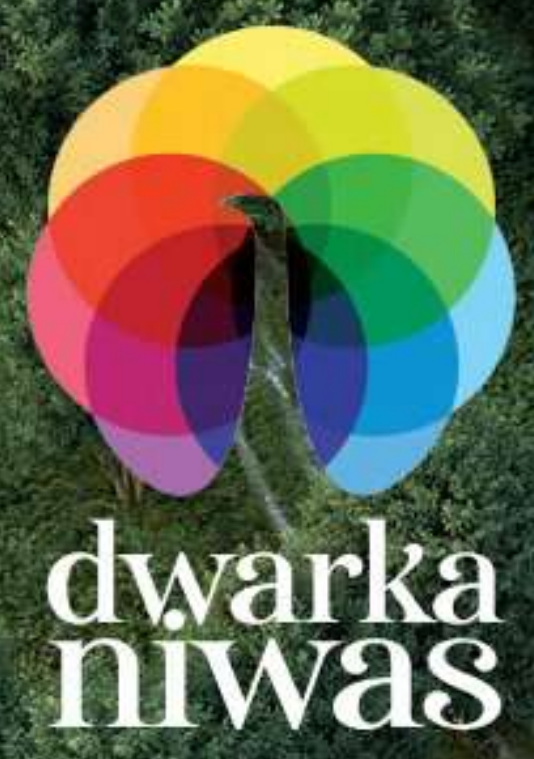
**dwarka  
niwas**

**1-2-3 BHK  
APARTMENTS**

ENJOY  
SPACIOUS  
LIVING



DWARKA NIWAS



## CHANGE THE WAY YOU LIVE

RD Eco Developers always look forward to new challenges and attaining fresh heights to maintain its supremacy. Over the years, the company has grown from strength to strength and has successfully completed many projects. With proven competencies in residential and commercial, RD Eco Developers shapes new lifestyles with a focus on design excellence, build quality and timely delivery.

We now bring to you a glorious opportunity to lead a dream lifestyle at "Dwarka Niwas". A luxurious living in the lap of nature which will change the way you live.

Nestled in the lush greenery, Dwarka Niwas, prominently located at the most prestigious location of Patna, comprises of a single tower with G+16 floors. It is a 1, 2 and 3 BHK residential project with a brilliant amalgamation of urban life with nature. With great views, enhanced ventilation and sunlight assured in every unit, Dwarka Niwas improves the physical and psychological health of the inhabitants.



DWARKA NIWAS

## LOOK AT LIFE AFRESH!!

Reconnect with the nature that  
you were cut off from. Live the  
life you have always dreamed of  
only at Dwarka Niwas!





*This is truly a home in nature!!*



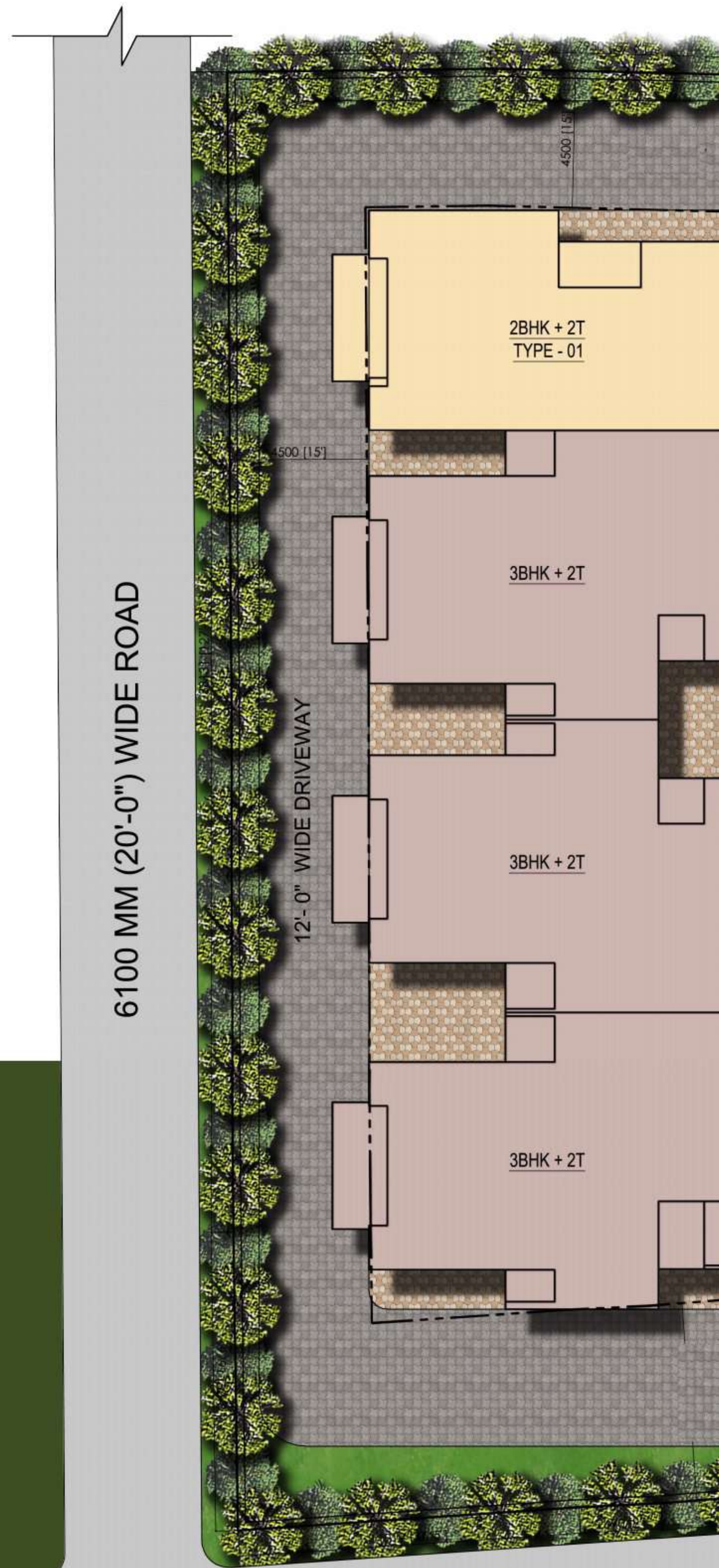
Set amidst the serene environment, Dwarka Niwas is thoughtfully planned and designed to satisfy your soul. The tower host 40 apartments giving complete privacy and privileges to the owner with a reserved view of lush landscapes from every room. Not just this, extra emphasis on cross ventilation and natural light in the design promotes a stress-free living environment. The project rises above the ordinary in every sense- high ceilings, incredibly spacious rooms, finest finishing and views that overlook the horizon.





## SERENE LOCATION, YET WELL WITHIN EASY REACH

The strategic location of "Dwarka Niwas" makes daily commute convenient with well-connected roadways. It is one of the most well-planned regions in Patna surrounded by nature's beauty. It is adorned with every necessary convenience of the city life. Prominent hospitals, reputed schools & colleges, malls and shopping centers are in close vicinity.





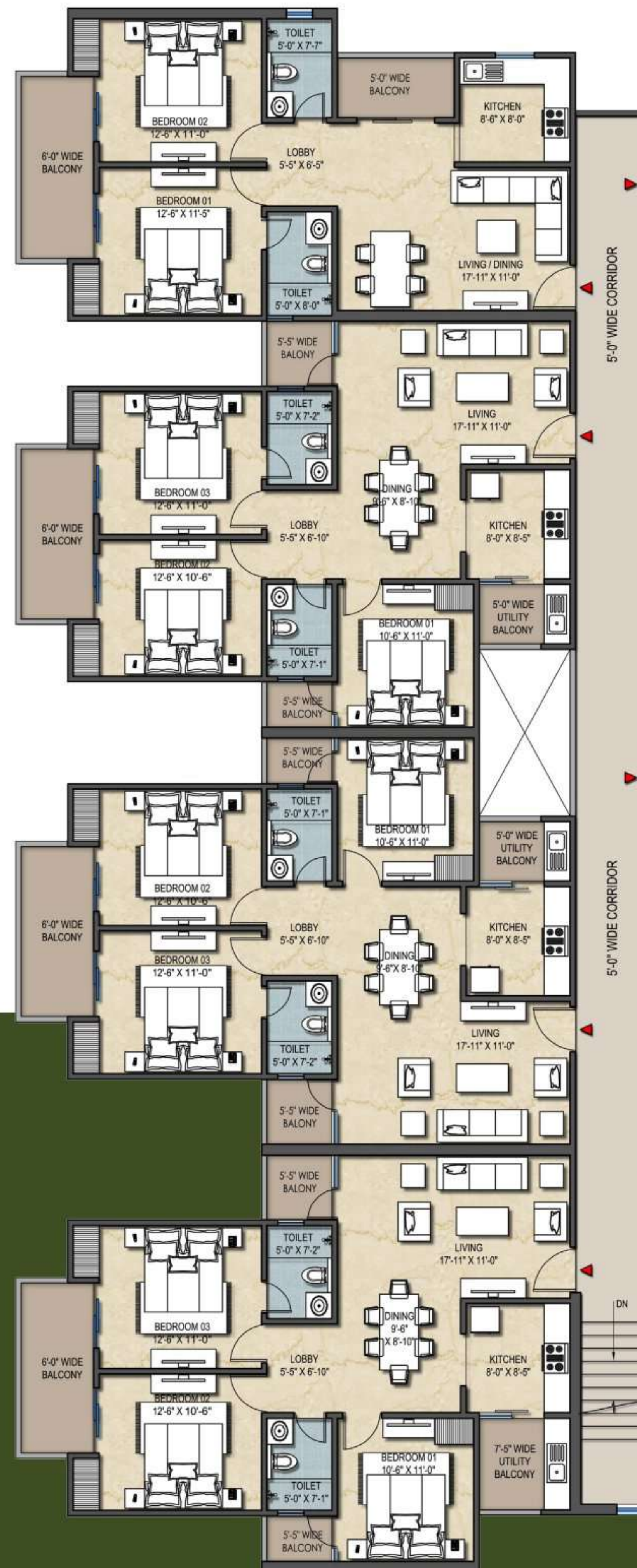


FLAT NO 104  
2BHK + 2T

FLAT NO 103  
3BHK + 2T

FLAT NO 102  
3BHK + 2T

FLAT NO 101  
3BHK + 2T







**dwarka  
niwas**

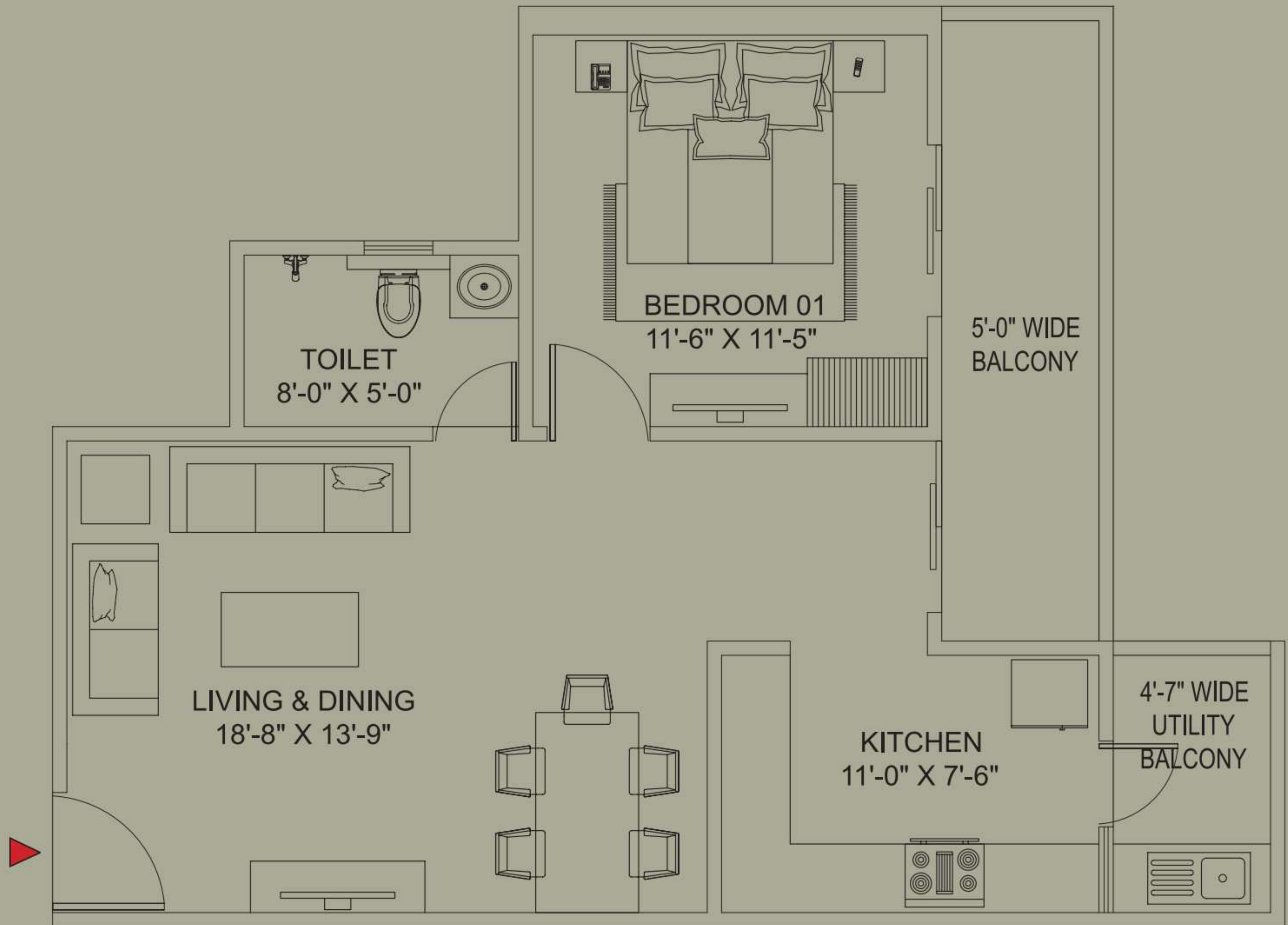
**FLAT NO 105**  
3BHK + 2T

**FLAT NO 106**  
3BHK + 2T

**FLAT NO 107**  
1BHK + 1T

**FLAT NO 108**  
2BHK + 2T

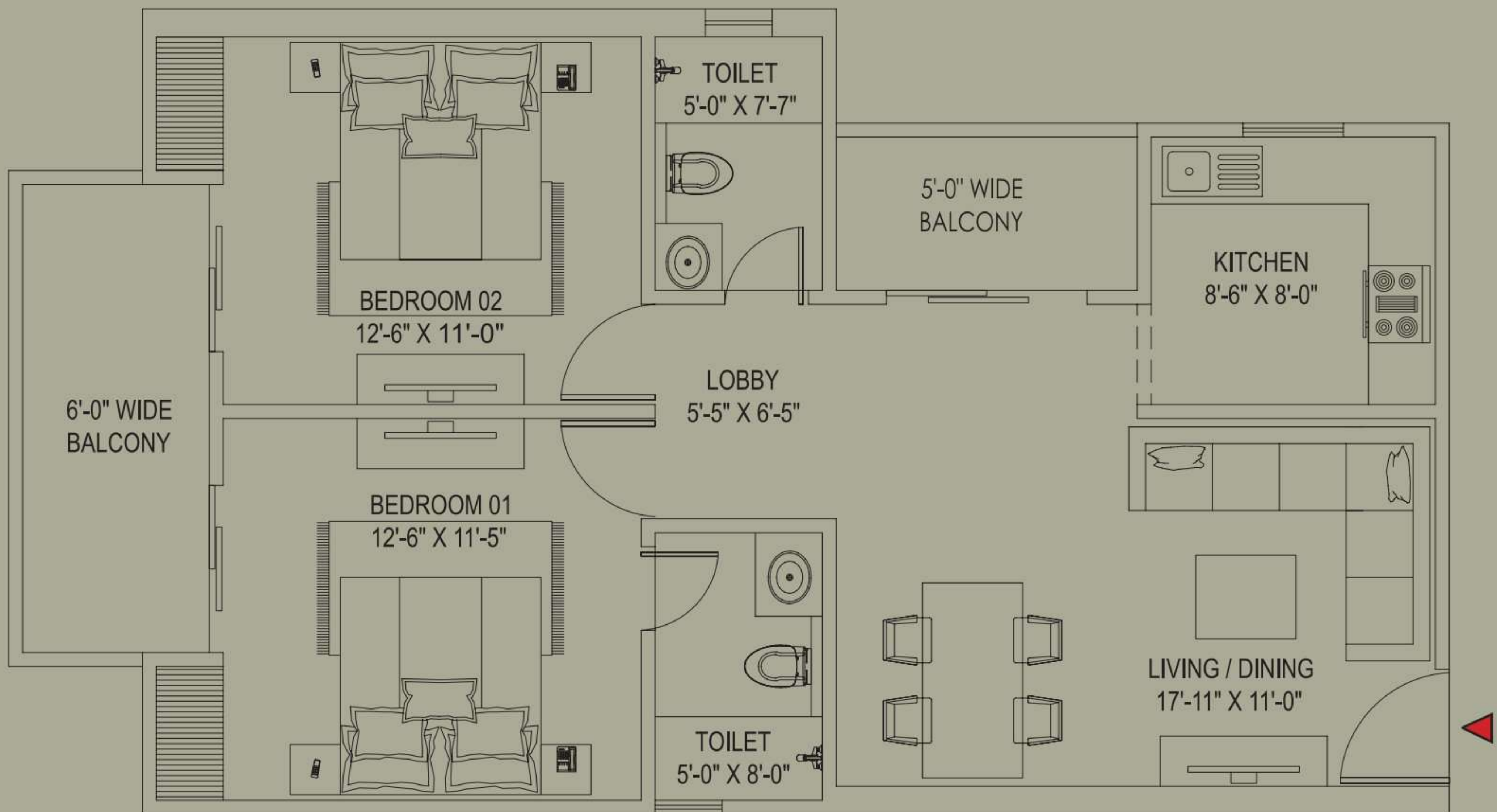
# Unit Plan



**1BHK + 1T**  
**1032 sqft**

1 Bedroom | Living and Dining | Kitchen  
2 Balconies | 1 Toilet

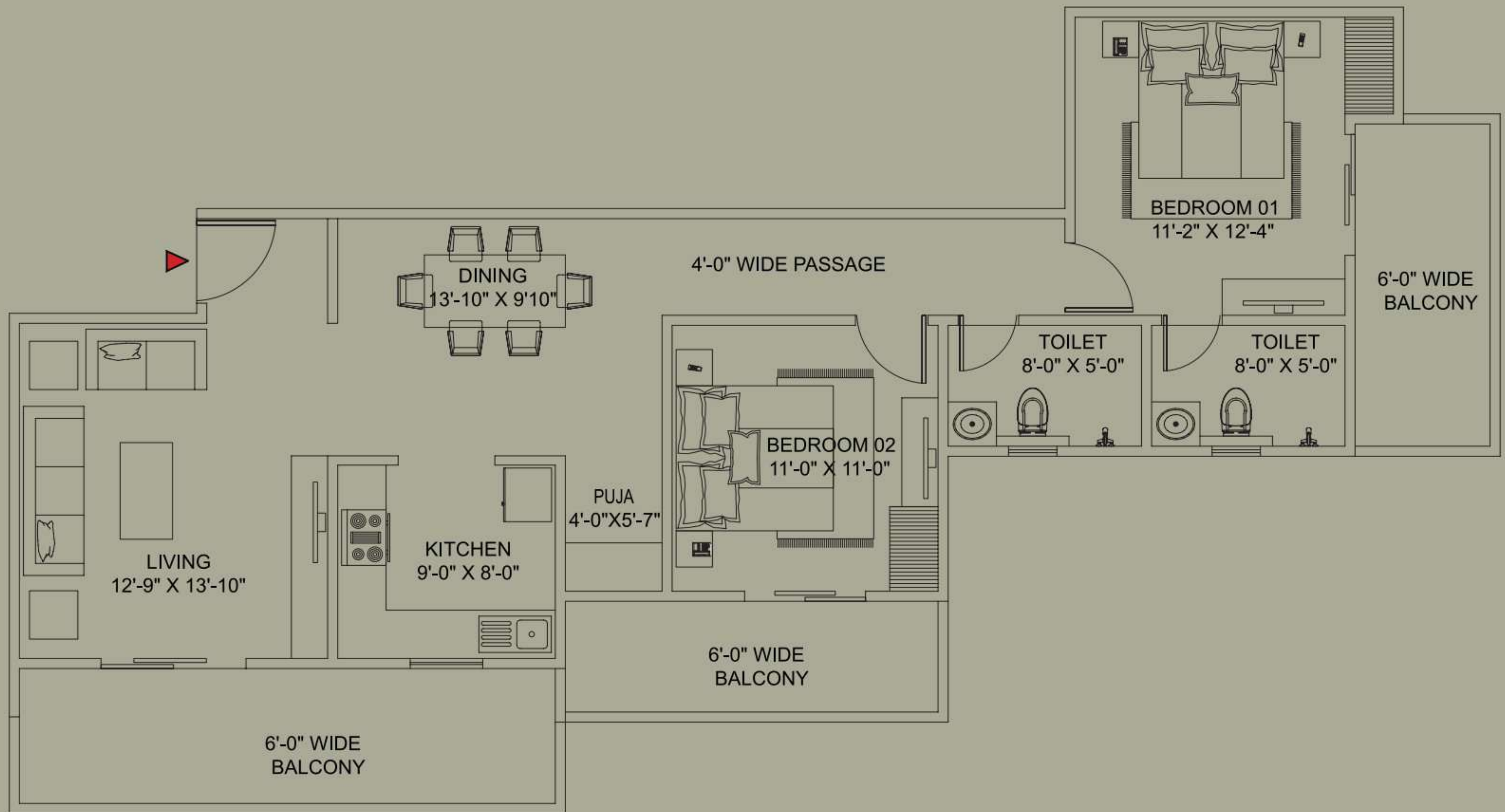
# Unit Plan



**2BHK + 2T**  
**1243 sqft**

2 Bedrooms | Living and Dining | Kitchen  
2 Balconies | 2 Toilets

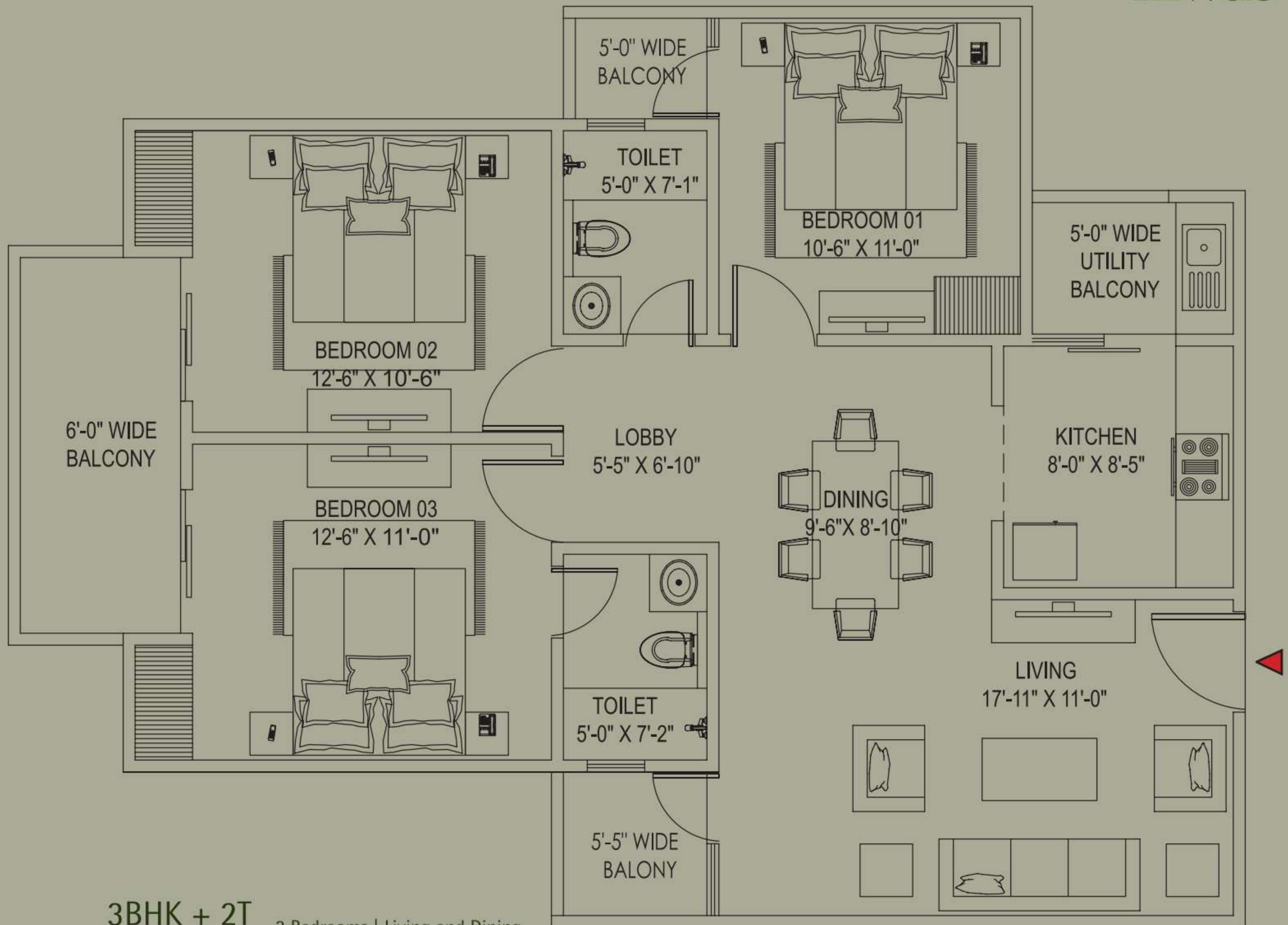
# Unit Plan



**2BHK + 2T**  
**1610 sqft**

2 Bedrooms | Living and Dining | Kitchen  
3 Balconies | 2 Toilets

# Unit Plan



**3BHK + 2T**  
**1468 sqft**

3 Bedrooms | Living and Dining  
Kitchen | 4 Balconies | 2 Toilets

DWARKA NIWAS

## ENJOY THE LUXURY LIFESTYLE WITH YOUR LOVED ONES.

DWARKA NIWAS enjoys an exceptional location right in the heart of RUPASPUR PATNA. It is well connected to major highways, making your commute to anywhere in the city easy. But there is much more to its location than just convenience.



#### CIVIL

- Raft Foundation
- Solid / hollow bricks masonry for external and internal walls
- RCC earth quake resistant frame work
- Polished concrete for car park flooring within the building

#### FLOORING

- 1200x600 vitrified filed flooring for living dinning & Bedrooms & Kitchen & Balcony rustic tiles

#### PAINTING

- External wall 2 coat of premium emulsion and texture Finish as per architect design internal wall & ceiling two coat putty finish

#### DOOR & WINDOWS

- Premium quality pre-hug doors
- Premium quality hardware
- Premium powder coated aluminum / upvc balcony slide doors & windows
- Main Door With Branded Locks
- S.S Handrails & Stair case for balconies

#### BATHROOMS

- Equipped with Jaguar/ Parryware/Cera/Kerovit or equivalent make washbasins and WCs. CP fittings of Jaguar/ Parryware/Cera/Kerovit or equivalent make.

#### ELECTRICAL & ELECTRONICS

- Concealed wiring using PVC conduits exhaust fans in Kitchen all washrooms

- Automatic DG backup for each apartment & shop with change Over system
- T.V & AC points in all bedrooms & living area Modular switches of premium brand Ceiling light in balcony
- Light fixtures for the common area external area apartment Balconies and at entrance door of the individual apartment

#### KITCHEN

- Adequate power points for home appliances bare kitchen for Customization of interior design points for water purifier Washing machine / dish washer

#### TOILETS

- Premium sanitary ware
- Premium branded bath fittings and accessories
- Premium quality anti-skid floor tiles and wall tiles up to ceiling

#### SECURITY SAFETY FEATURES

- Round the clock security
- Standards fire safety features on all floors
- CCTV for common area surveillance
- Intercom facility in apartment / Common area

# LOCATION



6.5 km drive to Airport



1 km drive to Railway Stn



1.5 km drive to Renowned Medical College



1 km drive to Line Bazar



3 km drive to Bus stand



**dwarka niwas**

### Site Address:

Dwarka Niwas, Poddar Tiles,  
Shivaji Path, Rupaspur, Patna, Bihar - 801503

### ARCHITECT: M/s DES ARC

UG SR 1A | Upper Ground Floor, Ansal Plaza  
Sector - 1, Vaishali, Ghaziabad - 201010  
Ph. : (O) 9818711273, 9818799463



**RD ECO**  
Developers Pvt. Ltd

### Developer Address:

**R D ECO DEVELOPERS PVT. LTD. JV SUAASTHA BUILDICON PVT. LTD.**

RD Green Resort | 1st Floor | Opposite Durga Mandir  
Gosai Tola | Patna - 800013  
e-mail- rdecodevelopers@gmail.com  
m: +91-9264495675 | +91-9264495677 | +91-9264444421

*Disclaimer: \*This Brochure is not a legal document. It describes the conceptual plan to convey the intent and purpose of RD Heights. The image are imaginary and the details mentioned in this brochure are tentative and subject to change at the sole discretion of the developer and / or architects.*